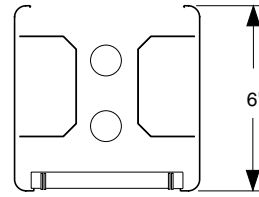


GS6B Square Series

Suspended
Direct/Indirect Illumination



GS6B
6" square suspended luminaire



1/1NR x T8



Construction

Housing: Extruded 6" square aluminum body, 6063T5, 0.100" minimum thickness. Available in one piece, unbroken lengths up to 12' with just two points of suspension.

Joiner System: Automatic alignment, no loose parts, one tool to tighten two factory installed bolts for a hairline seam. No light leaks.

Ballast: Osram - Sylvania or equal electronic RS ballast with less than 10% THD is standard: **ERS**.

Mounting and Feed: Aircraft cable is 7x7 stranded stainless steel with machined stainless steel stopper fitting at the top end. Lower end strands are welded and ground for easy insertion into continuously adjustable cable gripper. Feed cord is straight, white 3/C SVT or SJT #18 AWG. Coiled cord is available (specify **CC**).

Stems are 3/8" schedule 40 pipe with top swivels. California UBC compliant stems with internal safety cables available (specify **SEQ**). Direct to wall mount (specify **WM**), wall hung (specify **WH**), wall bracket mounted (specify **WB**), end mounted (specify **EM**), and direct to surface mounted (specify **SF**) are also available.

Electrical

UL listed wiring and components throughout. Housing is completely wired with quick-connect plugs at all mating joints and individually tested. No fixture disassembly and no field wiring is required to install rows.

All fixtures bear UL & CUL Dry Location labels. Damp Location labels are available. Specify **DL** in the Options field.

Optical Performance

Reflectors: 87% reflectance white painted aluminum.

Acrylic Prismatic Lens: Specify **APL** for optional 0.093" acrylic prismatic lens.

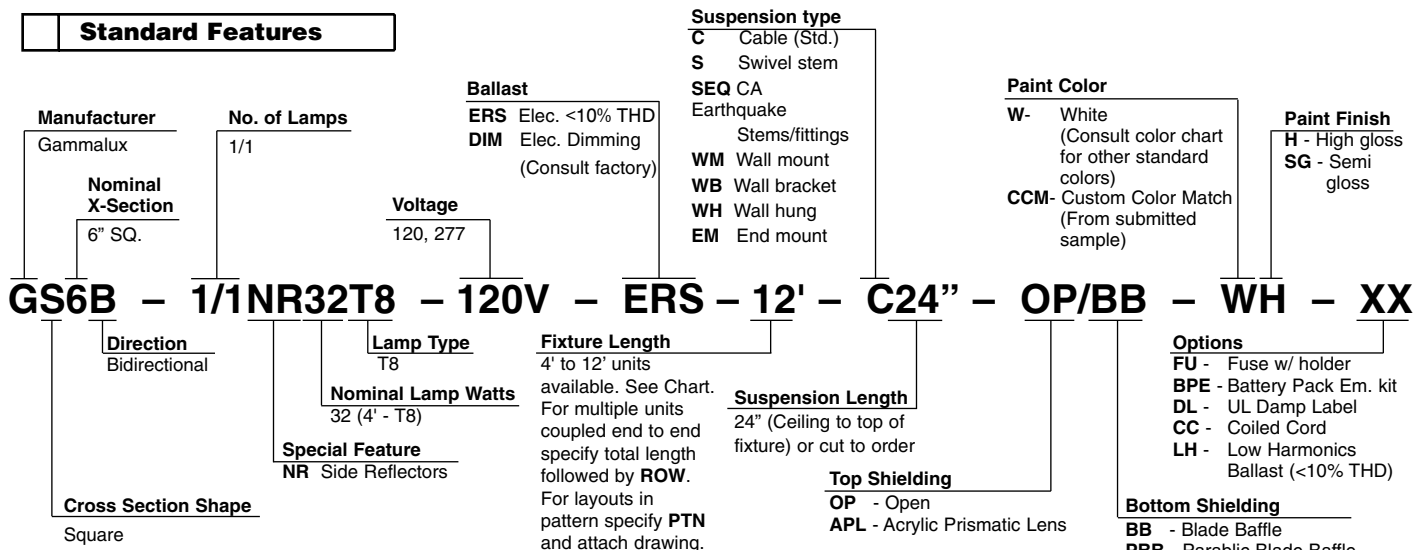
Blade Baffle: Specify **BB** for optional blade baffle.

Parabolic Blade Baffle: Specify **PBB** for optional specular aluminum parabolic blade baffle.

Finish

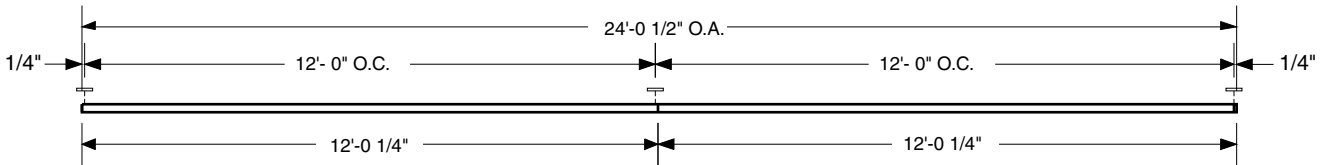
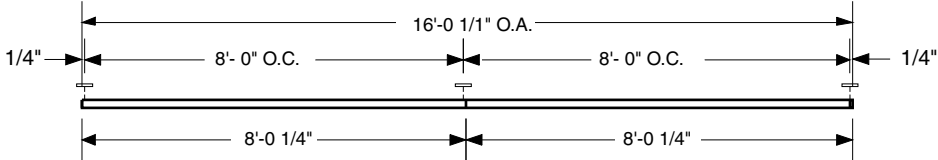
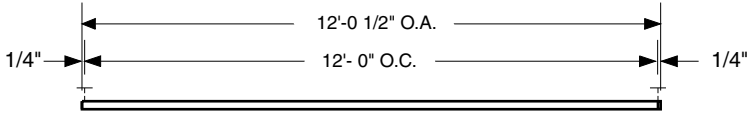
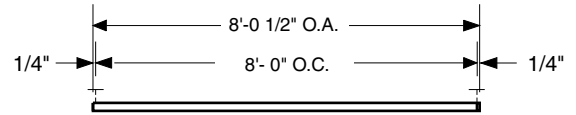
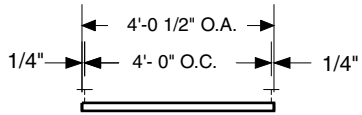
Housing and all exposed components are electrostatically sprayed with high solids aliphatic two component polyurethane to an average thickness of 2 mils. over acid etching primer. Specify **H** for high gloss in Paint Finish field. Specify **SG** for semi gloss.

Standard Features

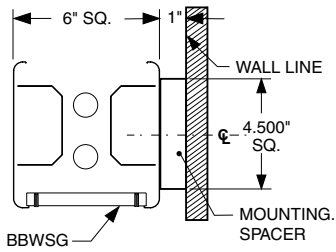


Mounting Dimensions

For individual and continuous rows of luminaires with cable or stem suspended mounting.

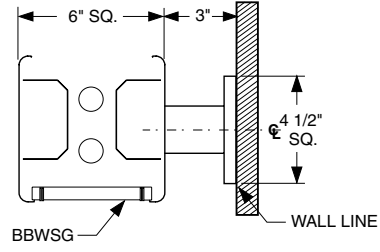


Wall Hung

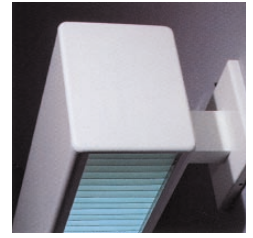


Wall Hung
(Specify *WH*)

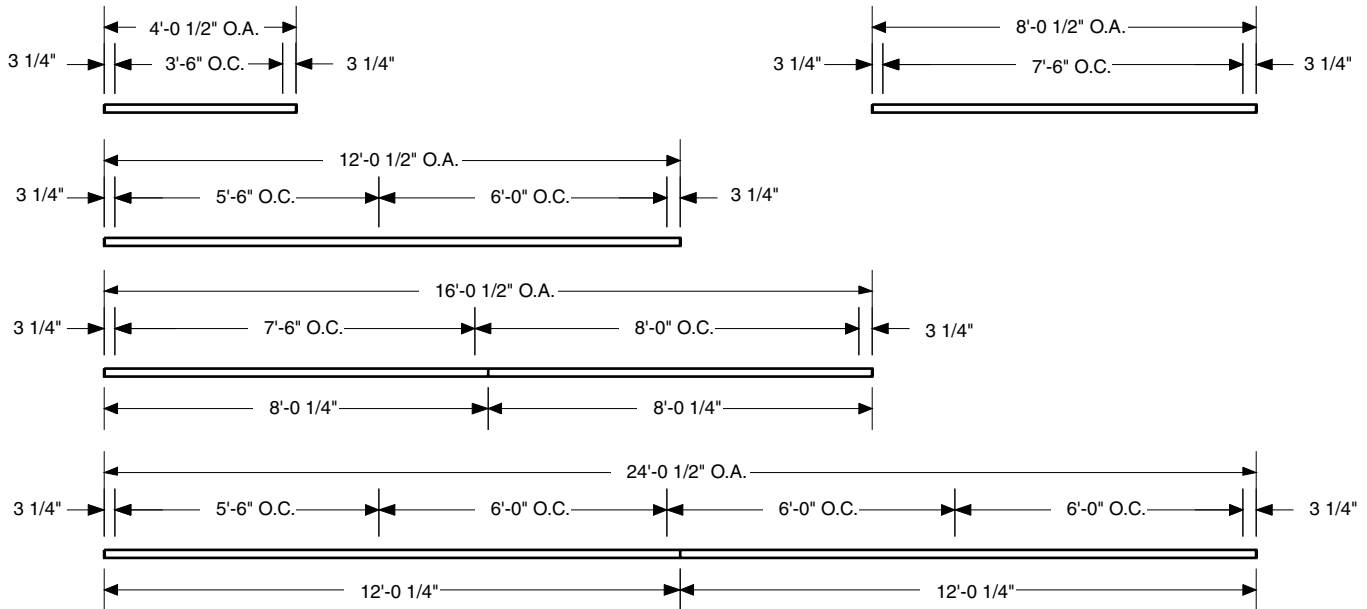
Wall Bracket



Wall Bracket
(Specify *WB*)



The mounting spacing shown here applies to all wall hung and wall bracket GS6B luminaires regardless of lamping.



Wall Mount

The mounting spacing shown here applies to all direct to wall mounted GS6B luminaires regardless of lamping (specify *WM*).

